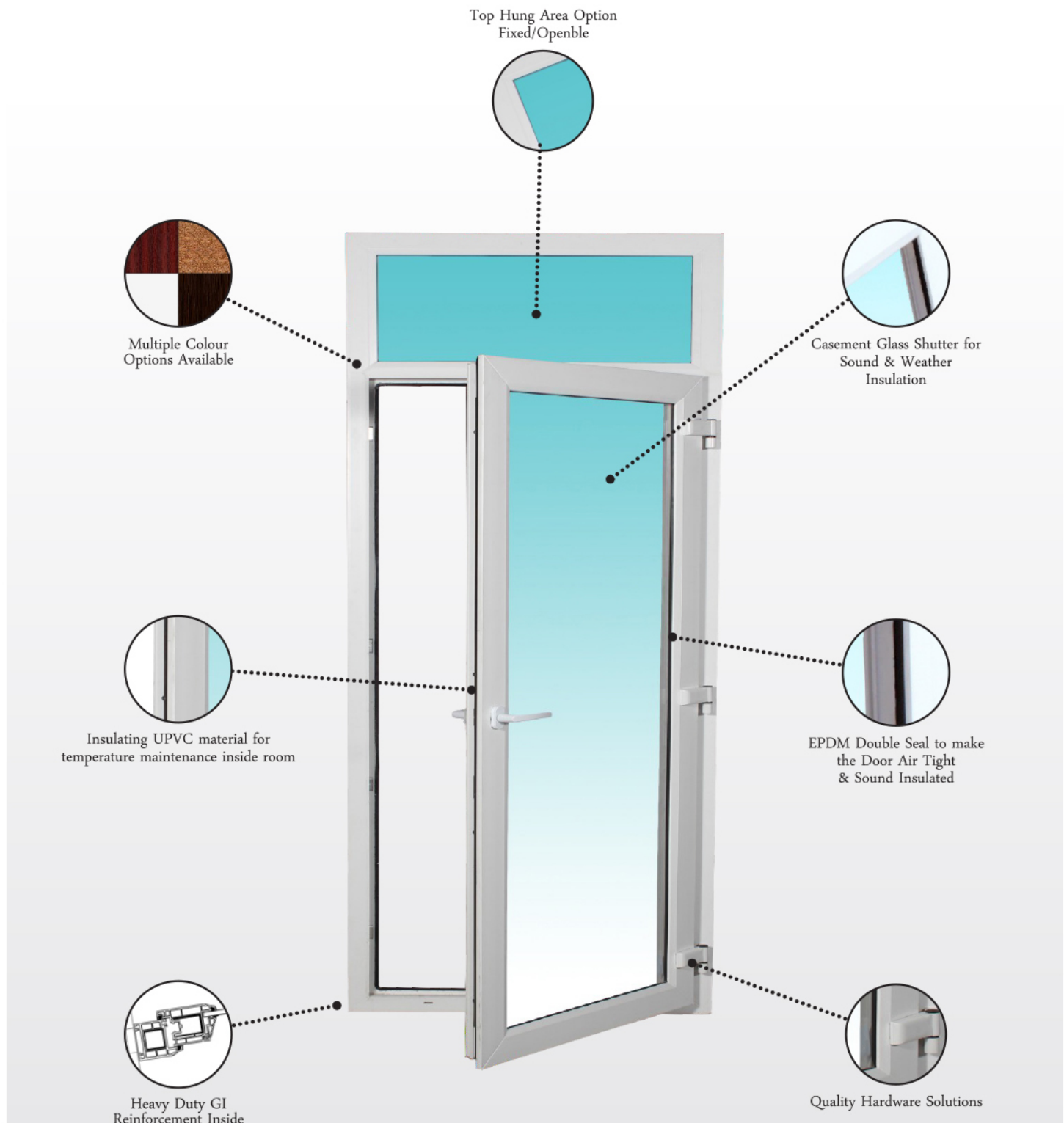


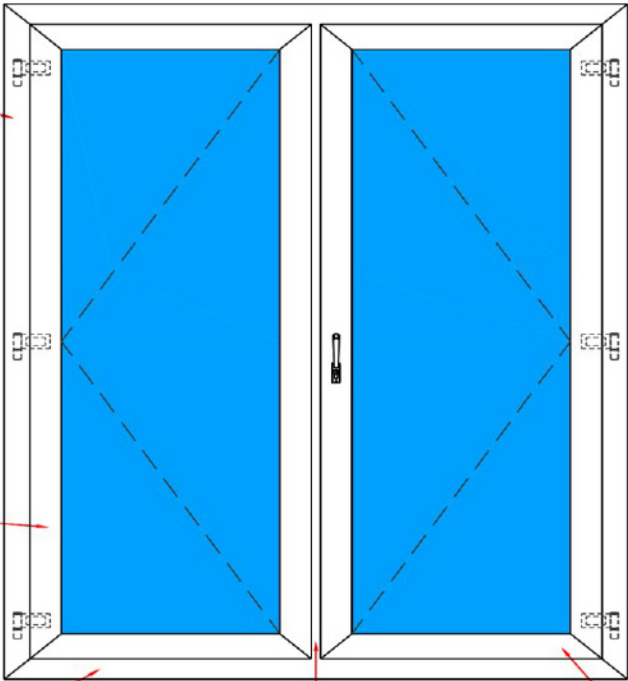
# CASEMENT DOORS

Casement doors are offered as a single sash creating a beautiful main entrance or as dual sash, connecting the indoors with the outdoors. These versatile doors can be used for patio, deck or balcony access. Casement doors can also be used as a room divider, either in place of a wall to create a dramatic effect or to add an open and airy feel to an existing wall. Commonly used for an entrance to a living room or study, casement door are a popular choice among designers as an attractive alternative to sliding doors.

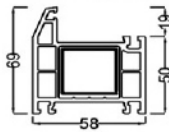




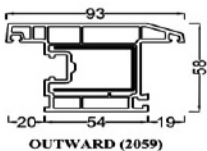
CASEMENT DOORS



① **FRAME (P1963)**

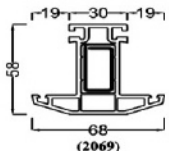


② **SHUTTERS**

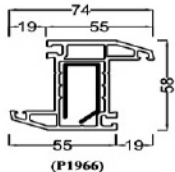


**OUTWARD (2059)**

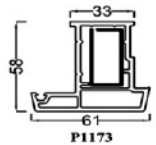
③ **MULLION OPTIONS**



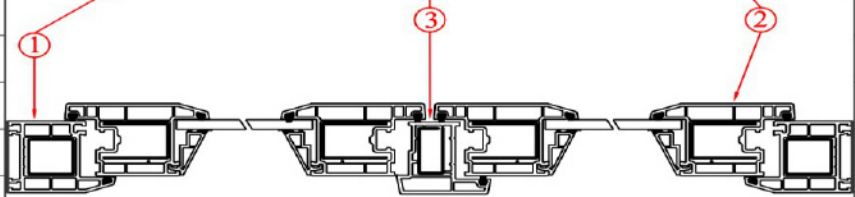
**(2069)**



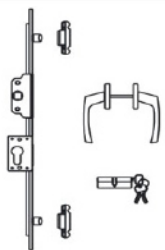
**(P1966)**



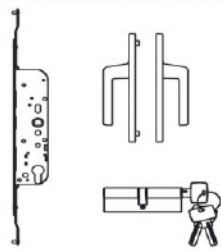
**P1173**



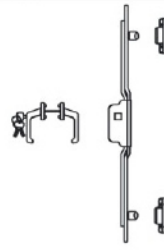
**MULTIPLE HARDWARE OPTIONS**



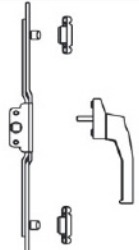
**Multi Point Transmission Gear with Handle (Both Side) (Cylindrical Lock with Key) - Type A**



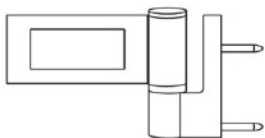
**Multi Point Transmission Gear with Handle (Both Side) (Cylindrical Lock with Key) - Type B**



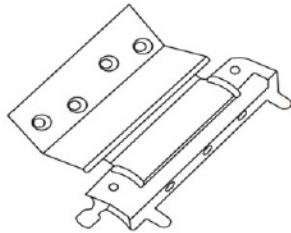
**Multi Point Transmission Gear with Lockable Handle & Key**



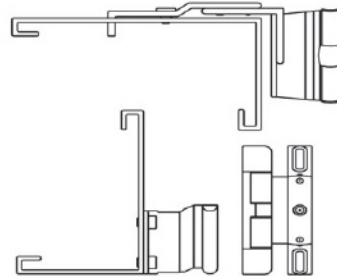
**Multi Point Transmission Gear with Handle**



**3D Hinge**



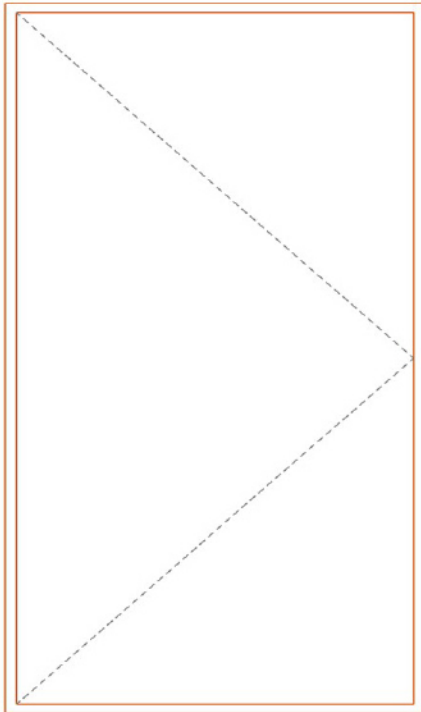
**L-Hinge**



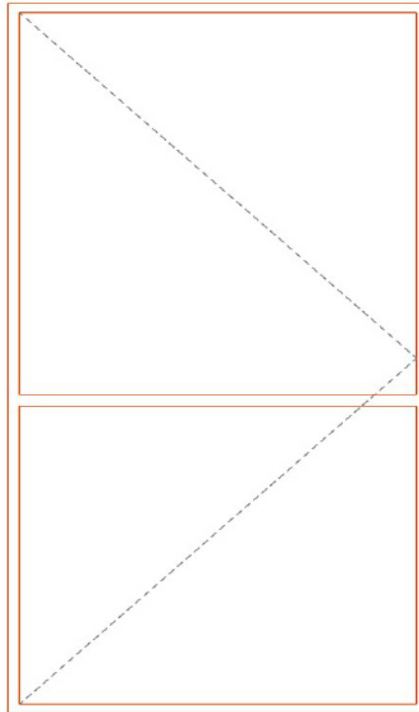
**Top Bottom Middle Hinge**



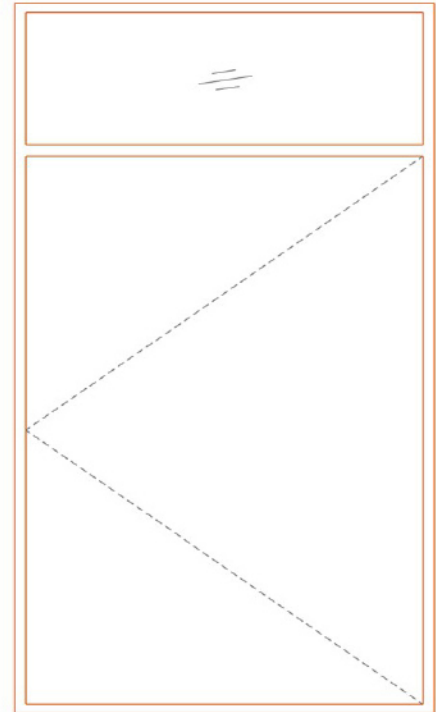
## CASEMENT DOORS - GENERAL CONFIGURATIONS



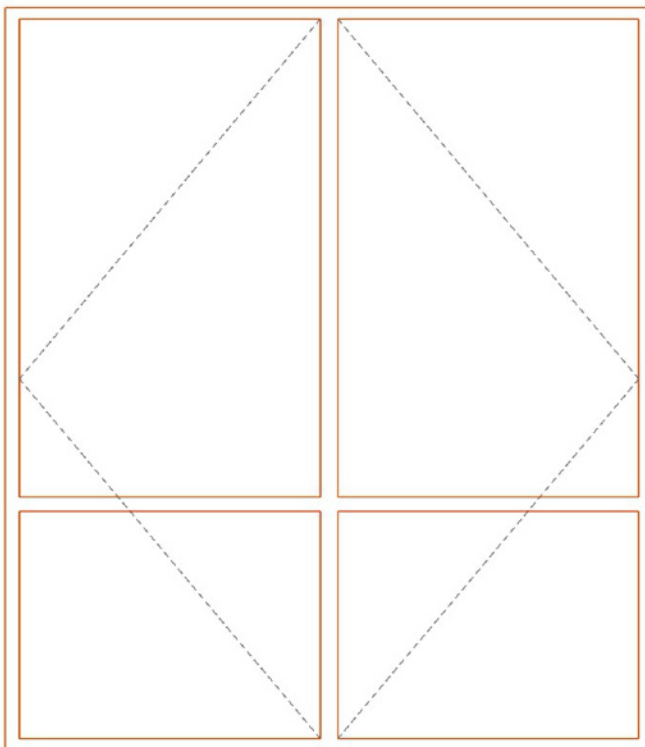
**A**



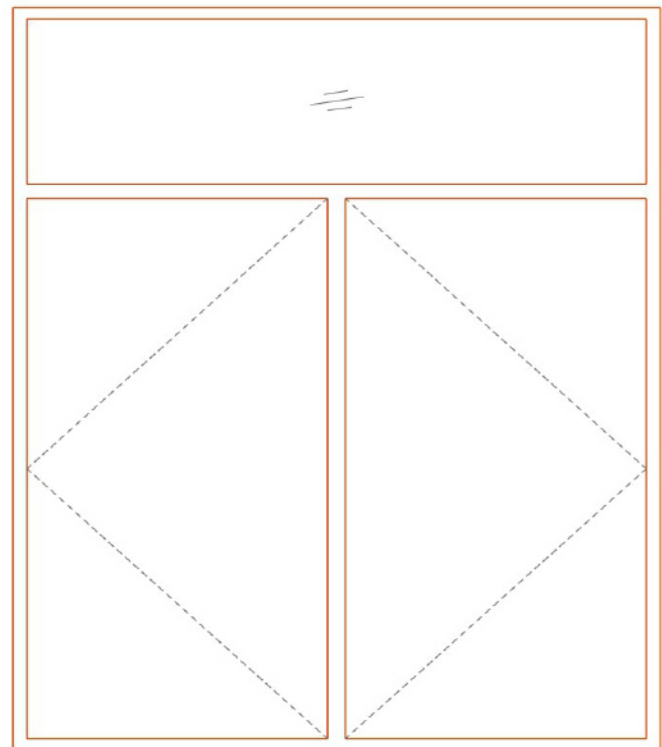
**B**



**C**



**D**



**E**

and many more...

### SPECIFICATION

Casement Door frame made of uPVC Profile Section of size 58mm x 69mm (wxh) having outer wall thickness of 2.70mm (+/- 0.2mm) and 3 box multi-chamber construction. The shutter of openable door shall be made of size 93 x 58mm having outer wall thickness of 2.20mm (+/- 0.2mm). Wherever required/specified, system shall have the fix mullion of size 68mm x 58mm. All sections of the frame, sash, transom & mullion shall be duly reinforced with G/J/U/O shape galvanised mild steel section of required thickness considering structural / wind load requirement. All the corners / mullion / transom joints of the frame & sash shall be mitred cut & fusion welded without any mechanical joining. All welded joints are to be neatly trimmed & feature grooved/raised nib finish so as to make the finished product free from all sharp edges & burrs. System shall have adequate drainage mechanism to permit the escape of water from horizontal member beneath each sealed unit. System shall be provided with the suitable uPVC co-extruded beads for glazing of the system with specified/required single / IGU Glass (5mm to 24mm thickness), duly cut at correct degree & fitted with suitable inner and outer EPDM weather seal gaskets. System is to be provided with proper operating and locking hardware mechanism as per system supplier's recommendations / buyers' requirement. Complete Door shall be fixed into the existing pre-finished aperture, by drilling & fixing through the outer frame using high quality fasteners & silicon glue is applied to fill up the crevice between wall & window frame for leak-proof installation.